

ct 1 - Rit A

SARK dwangpijl naar rechts



Combinatie ORC

HP 02

W3

R16

ORC (2-2-9-9-2) HP03

HP03

R19

HORC (5-1)

Z23

19m

ORC (2-2-2) HP

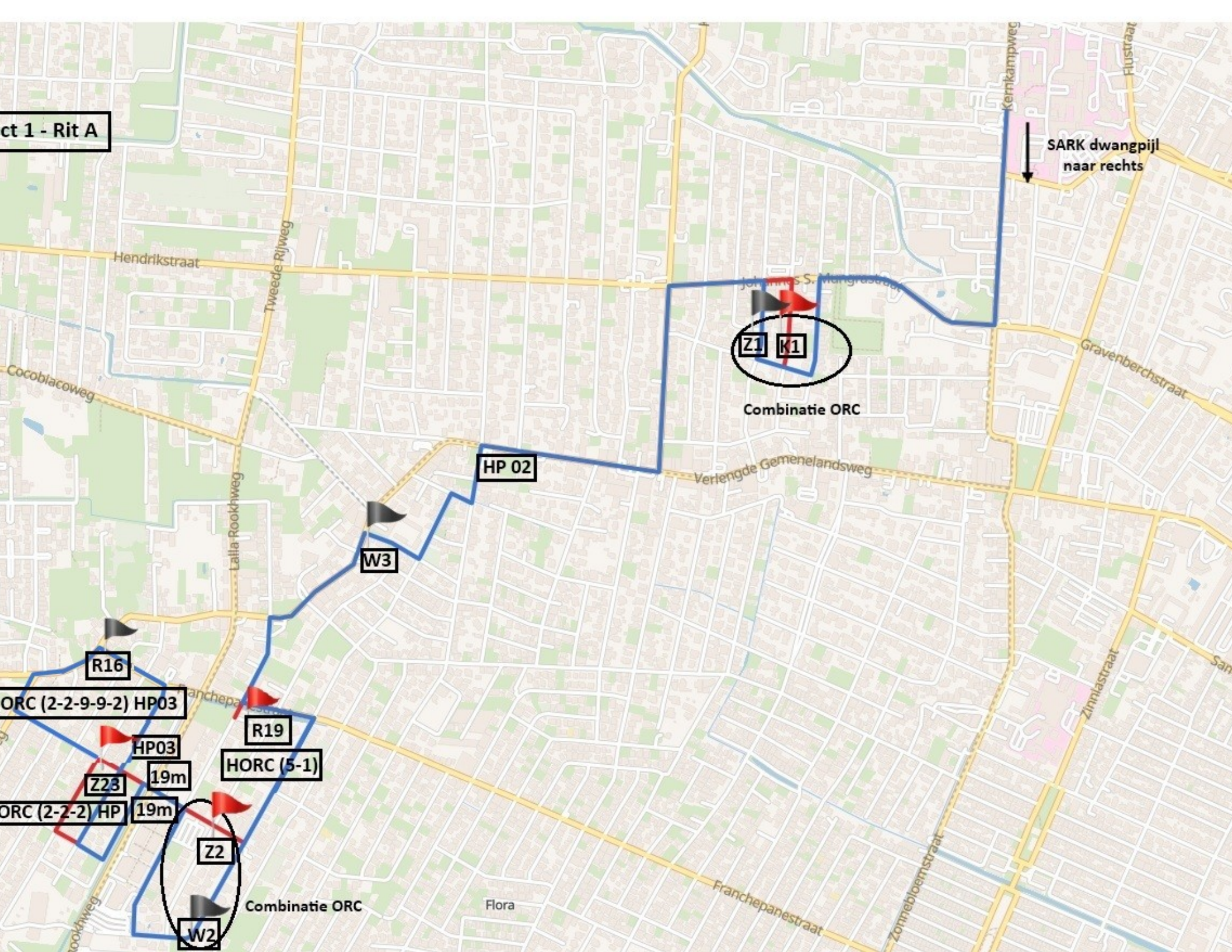
19m

Z2

W2

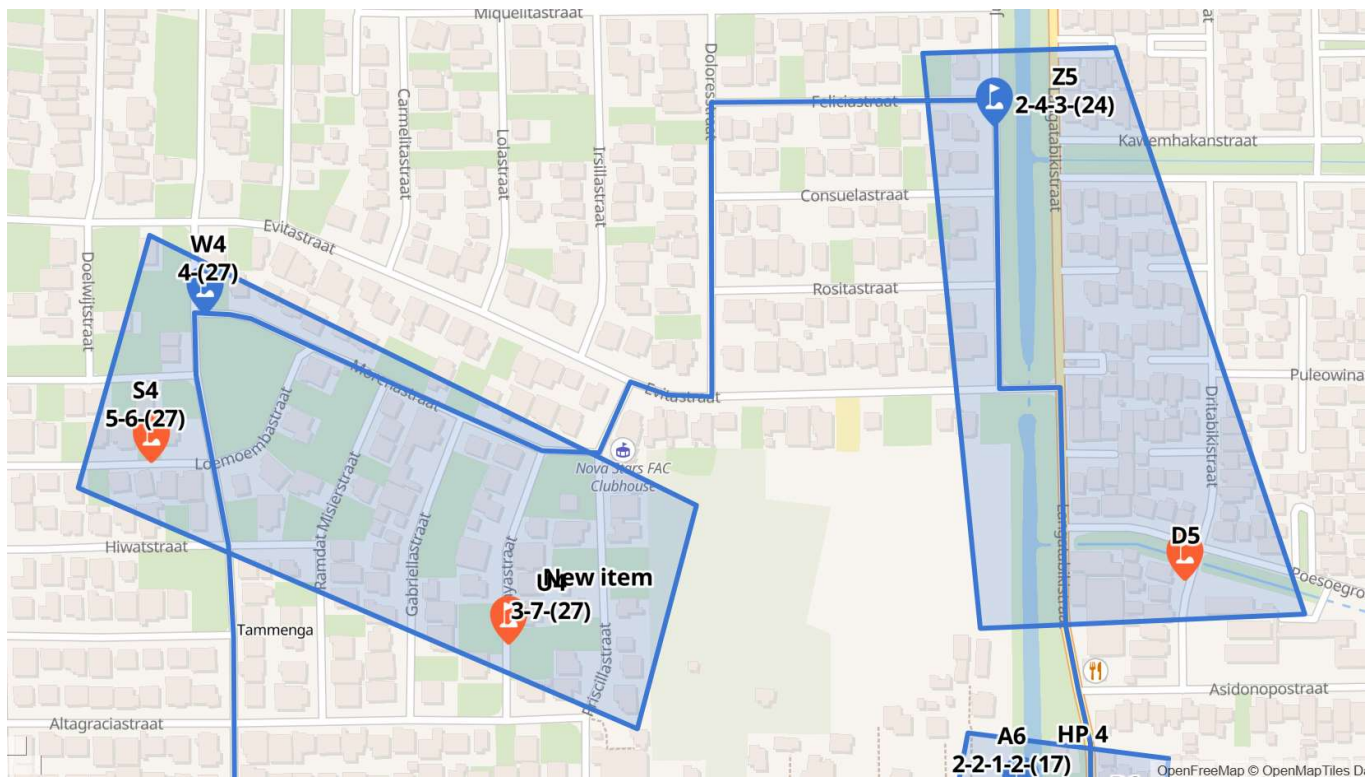
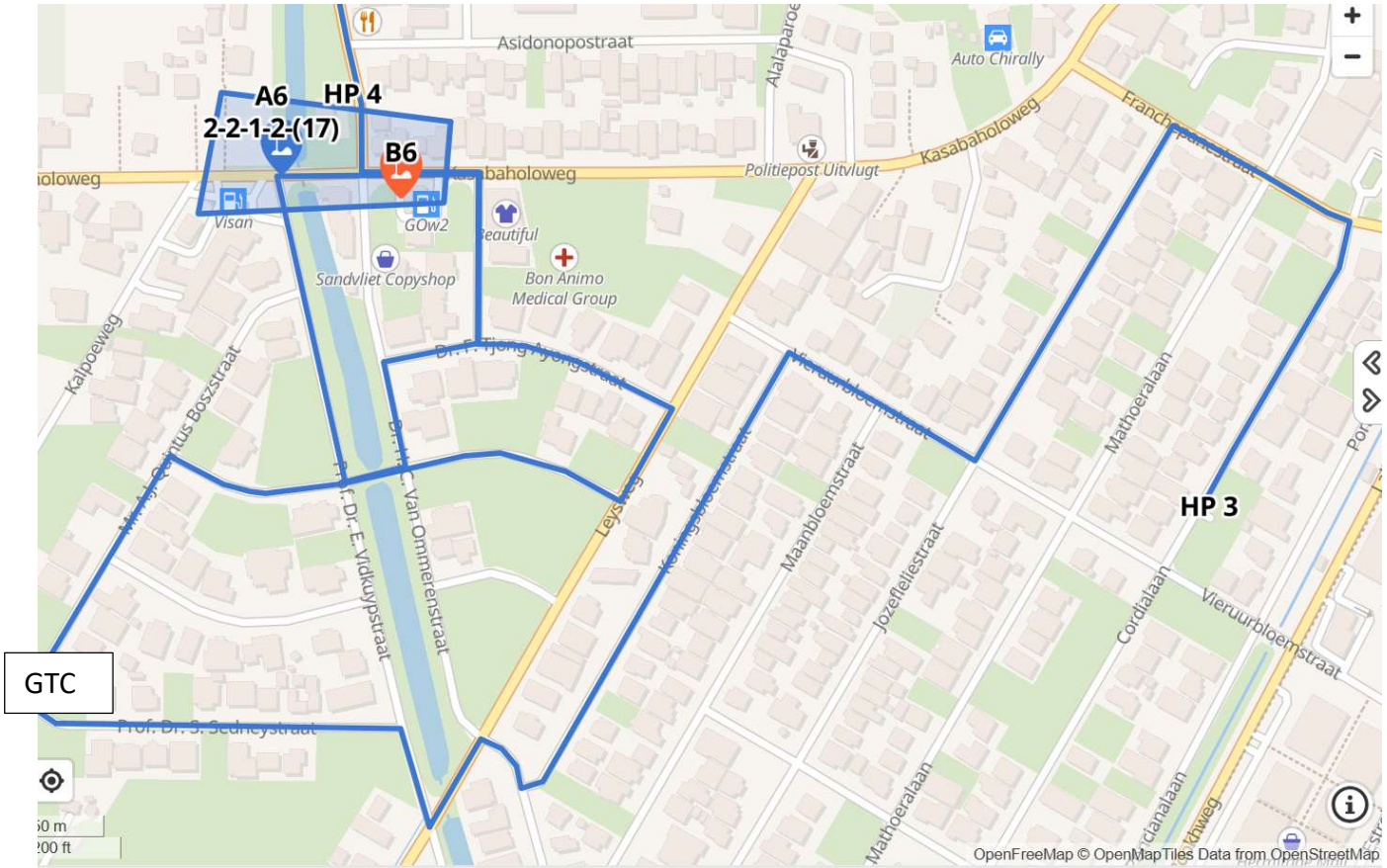
Combinatie ORC

Flora



BOLPIJL RIT

TRAJEKT ! RIT B



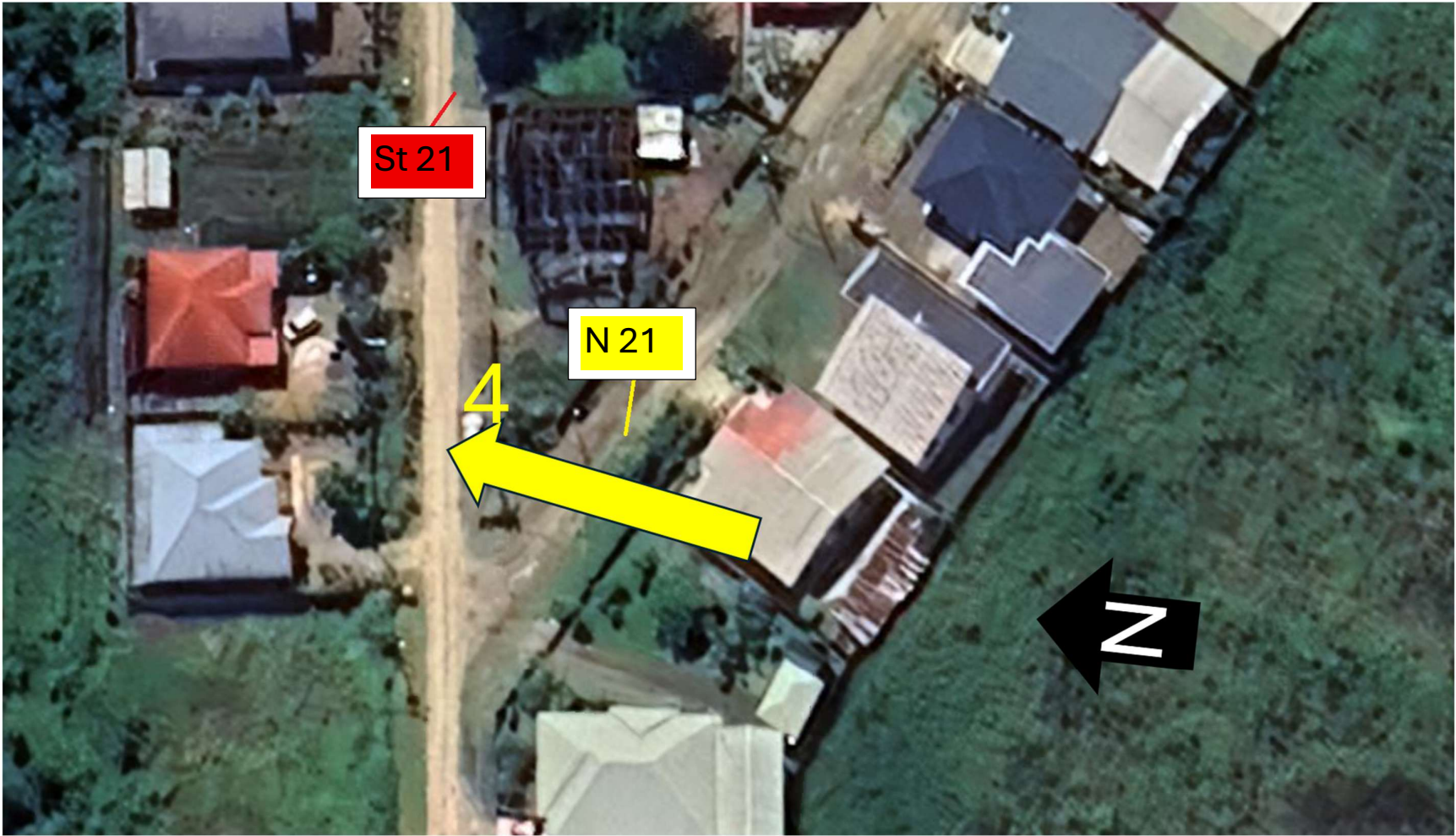
Traject 1 Rit C

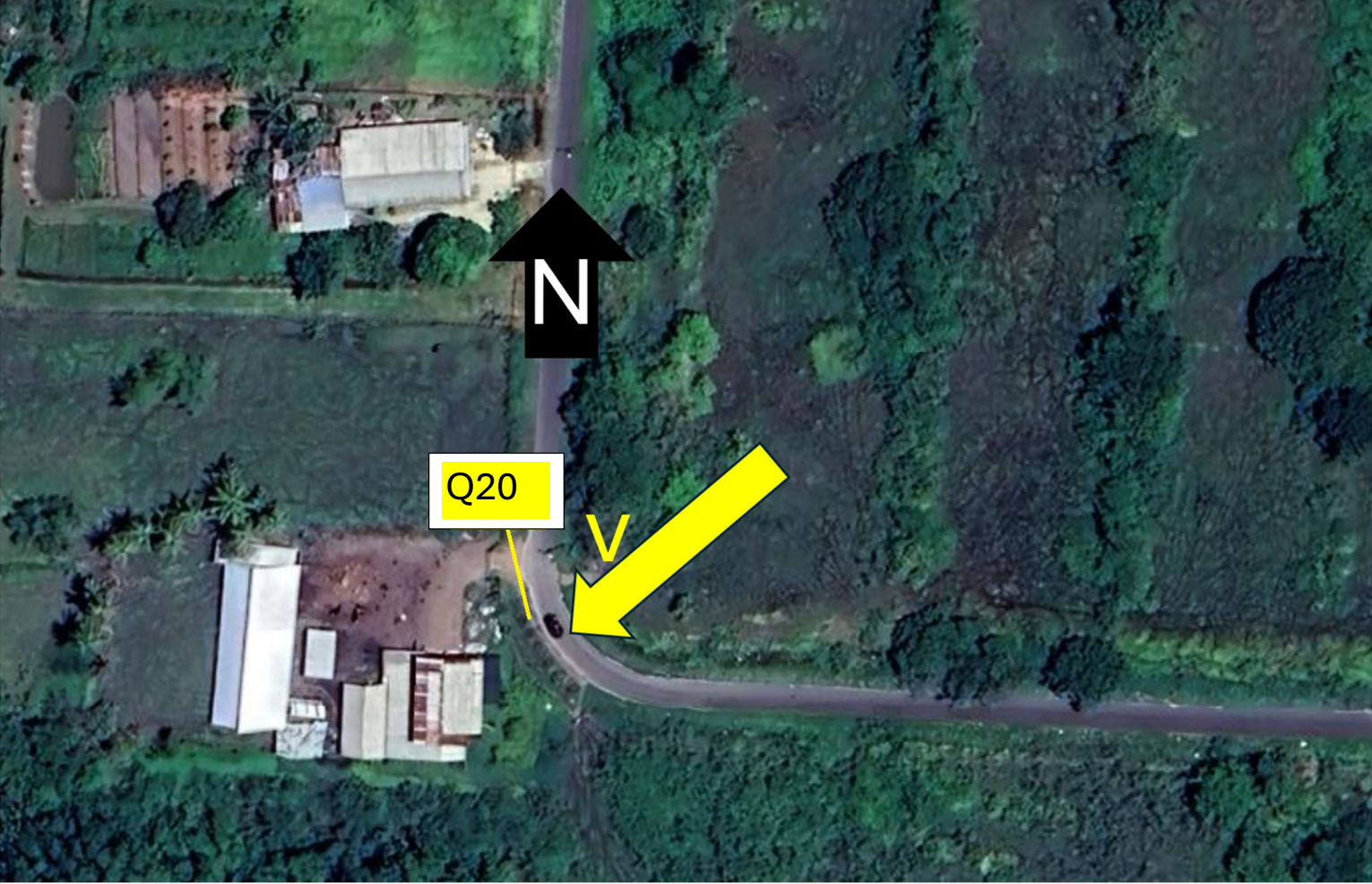










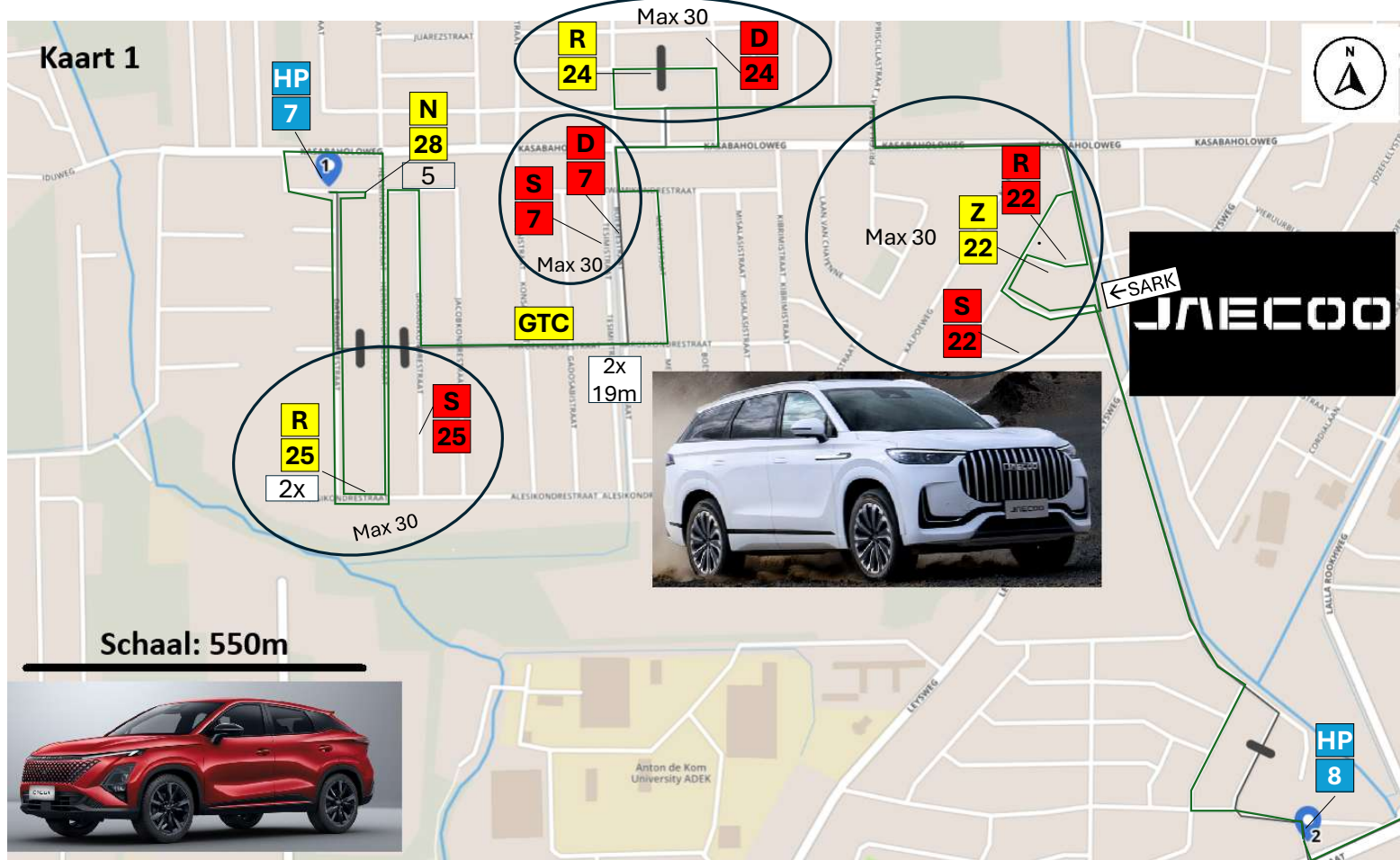




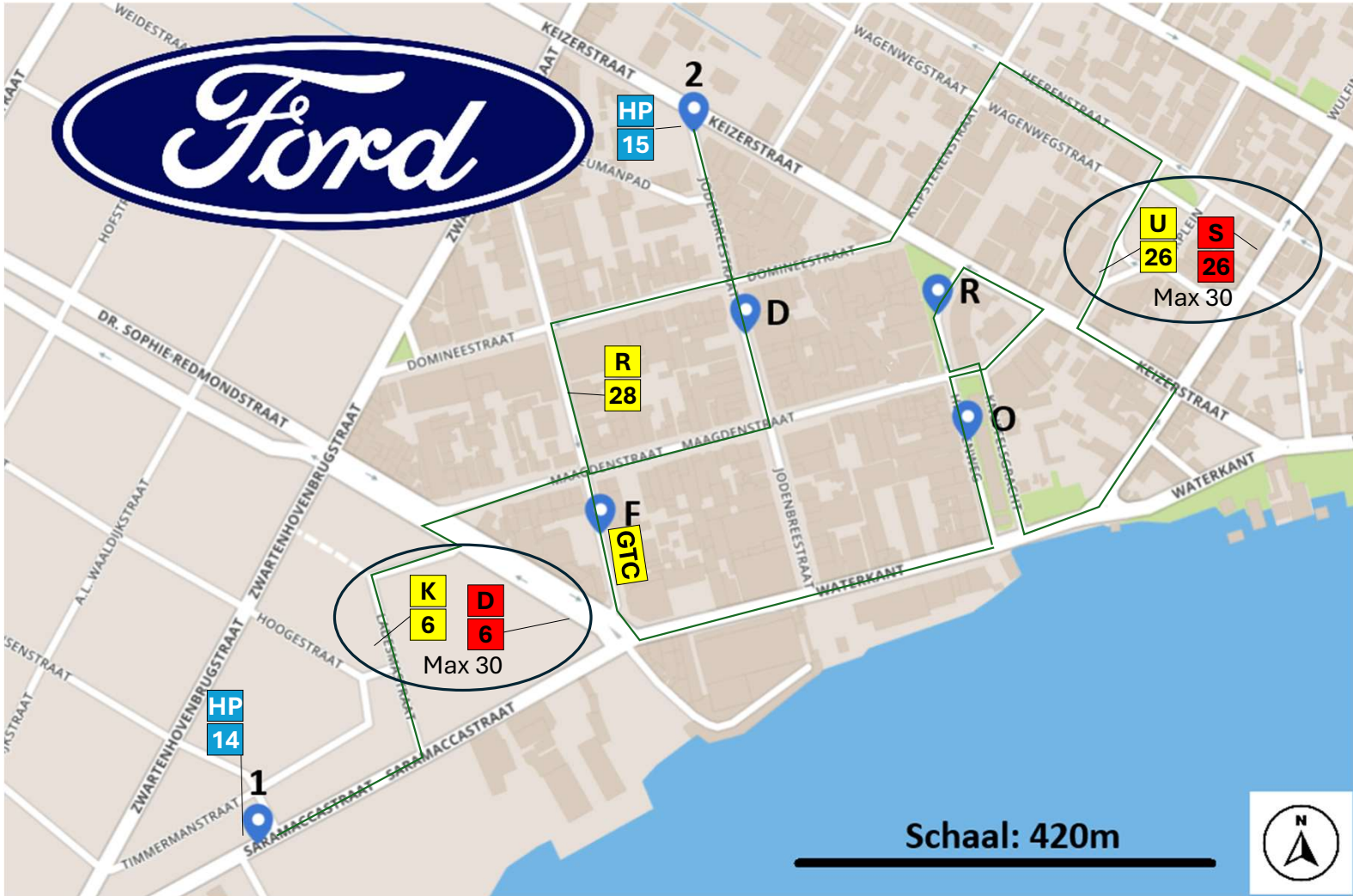
Q29

N

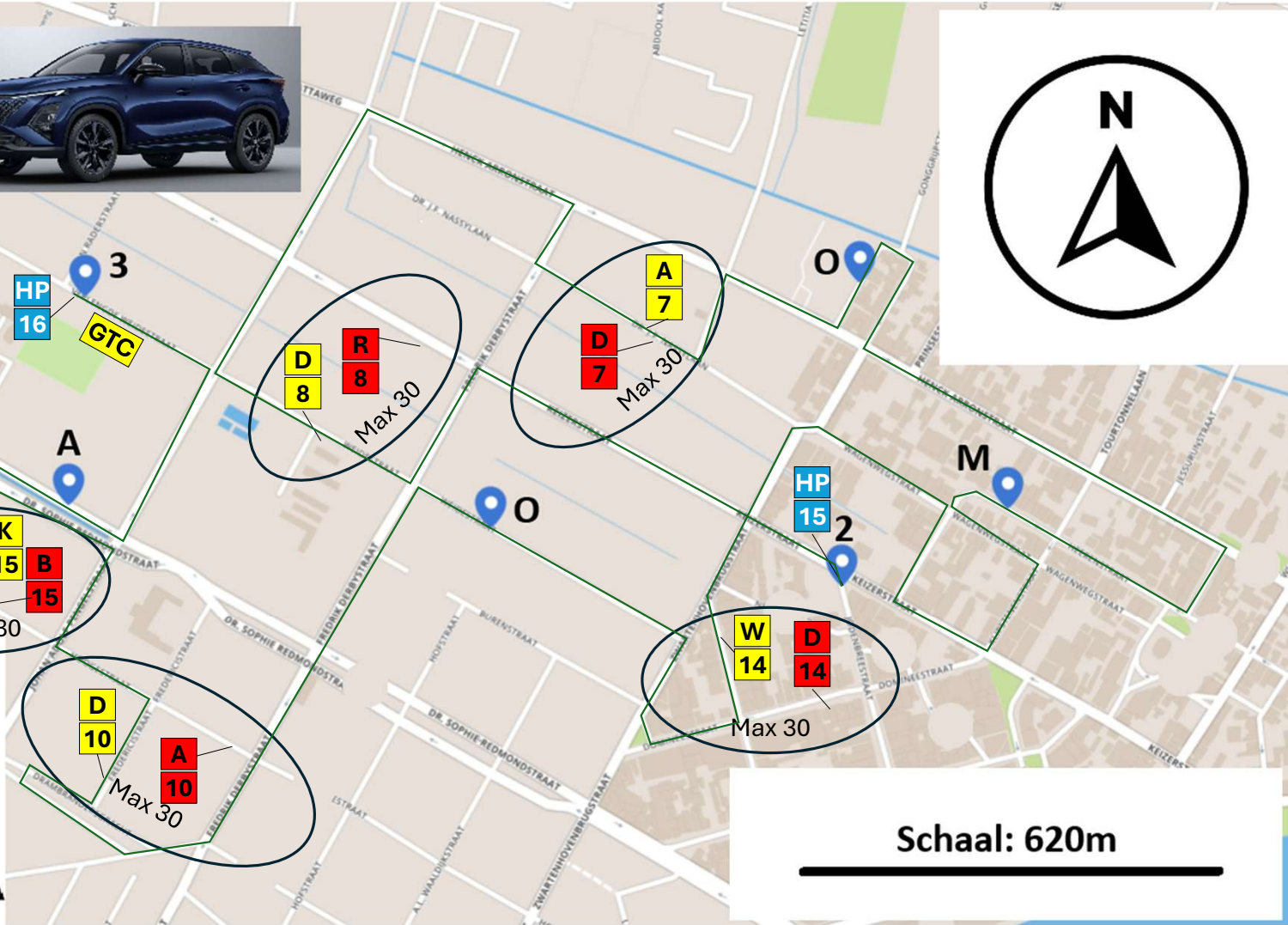
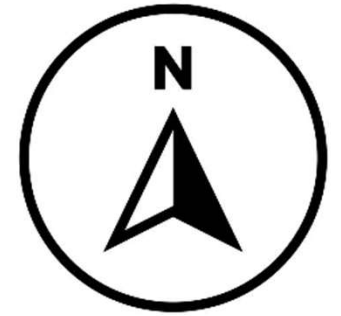
4x Combinatie
 1 Horc 5
 2x 19m
 1x Sark →
 tot: 11 ORC



Tot: 5 ORC

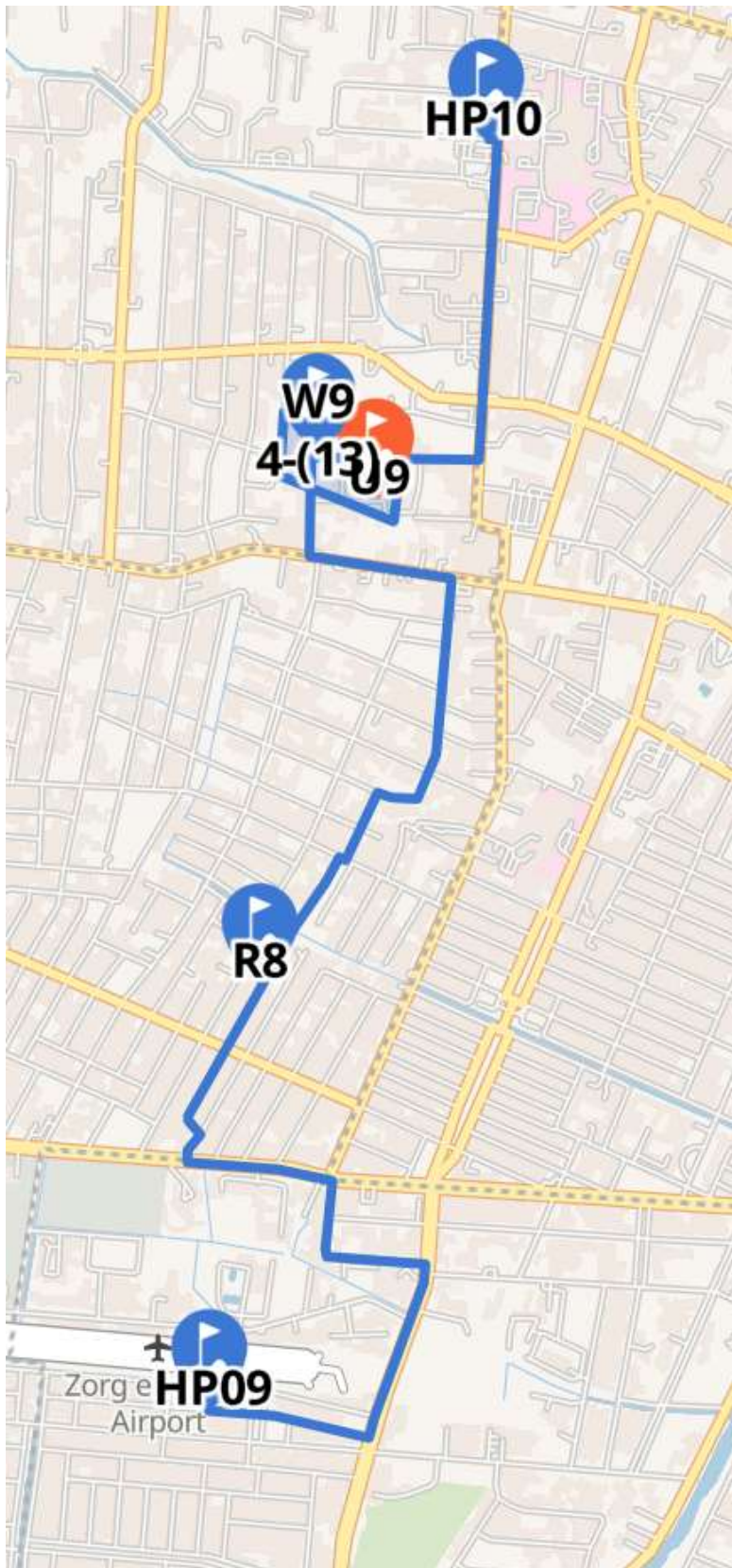


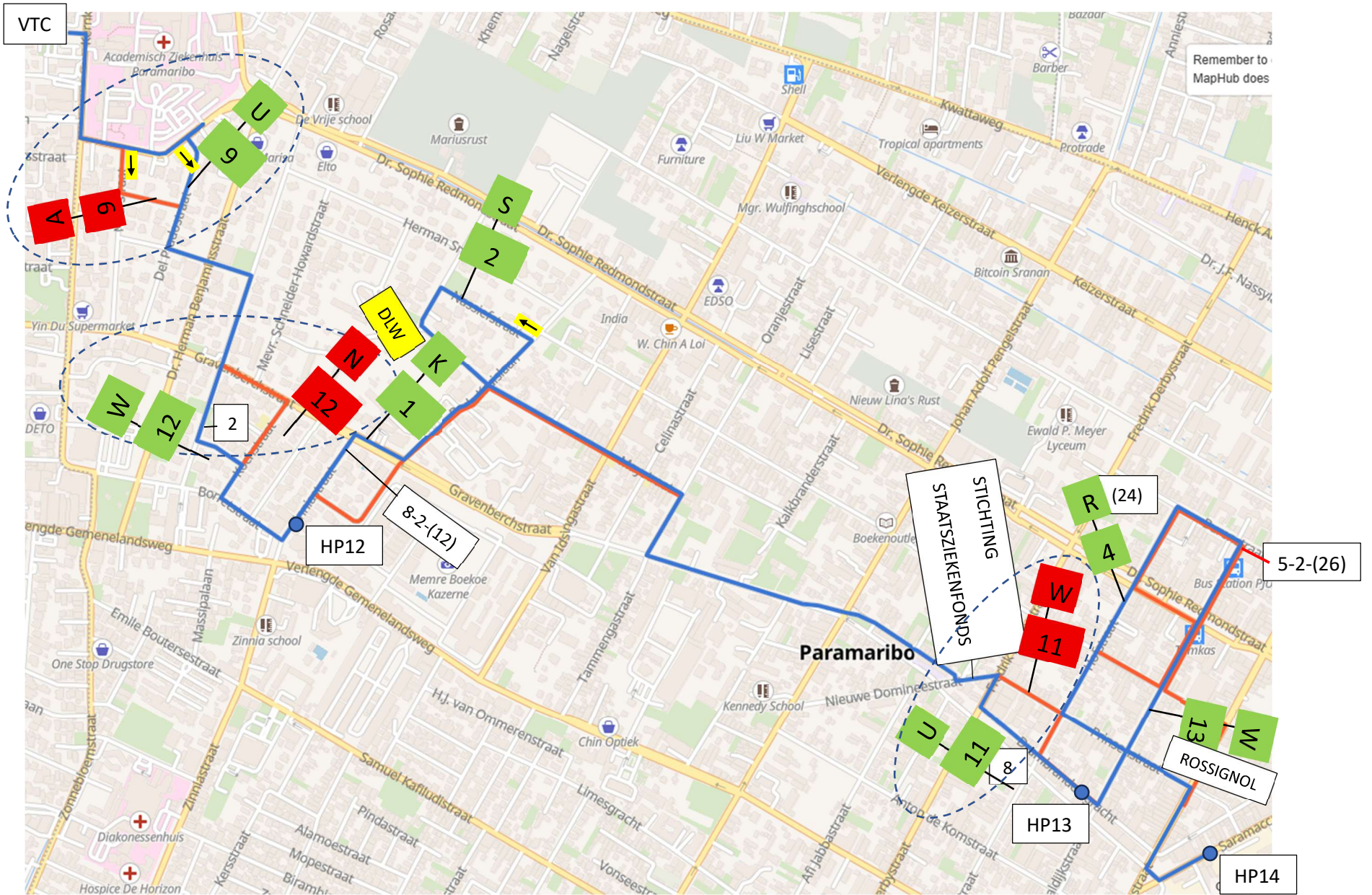
2x Combinatie
tot: 10 ORC



Trajekt 1 rit E

KlokkenRit





VTC

Remember to MapHub dues

STICHTING
STAATSIJEFOND

5-2-(26)

HP12

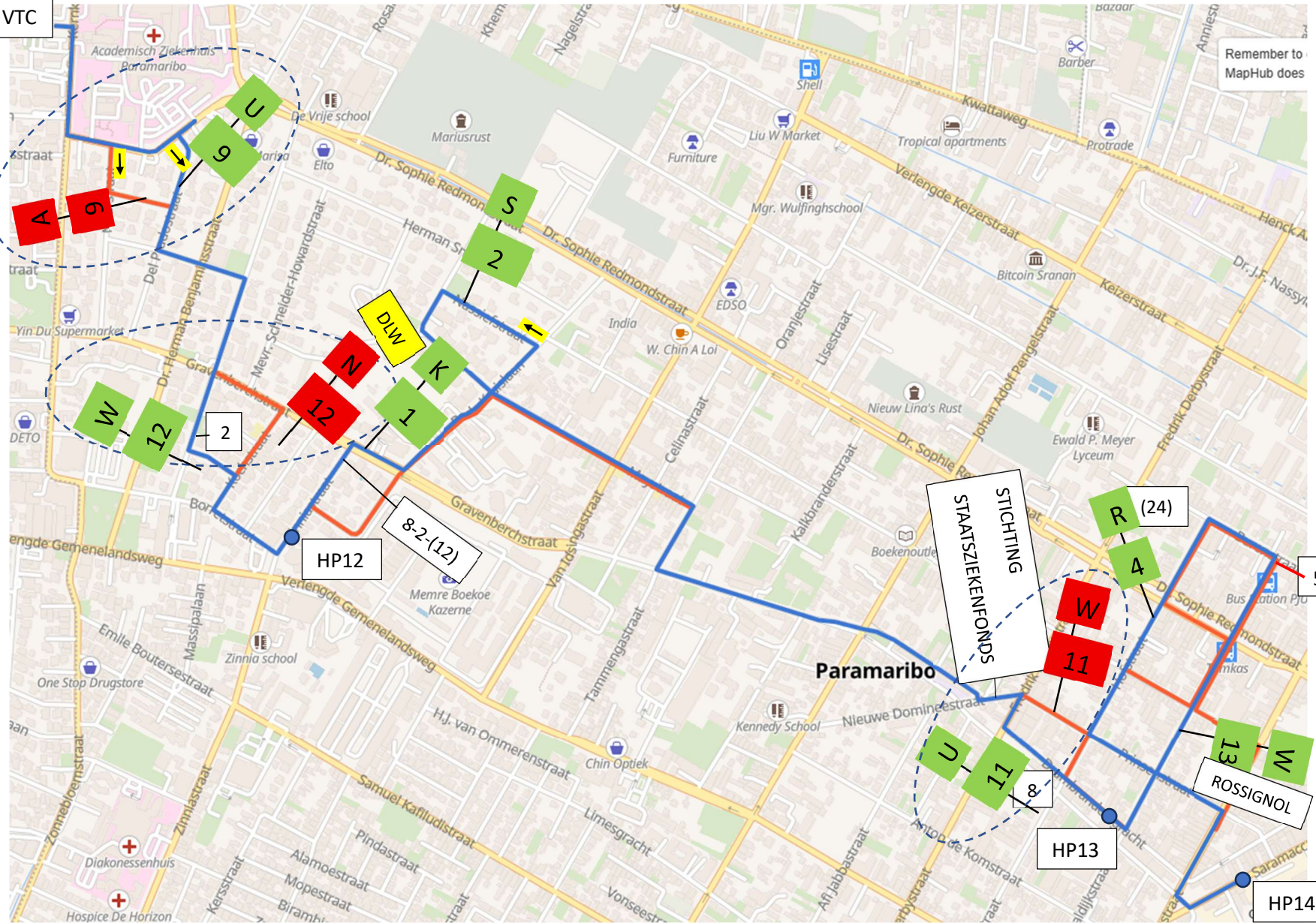
8-2-(12)

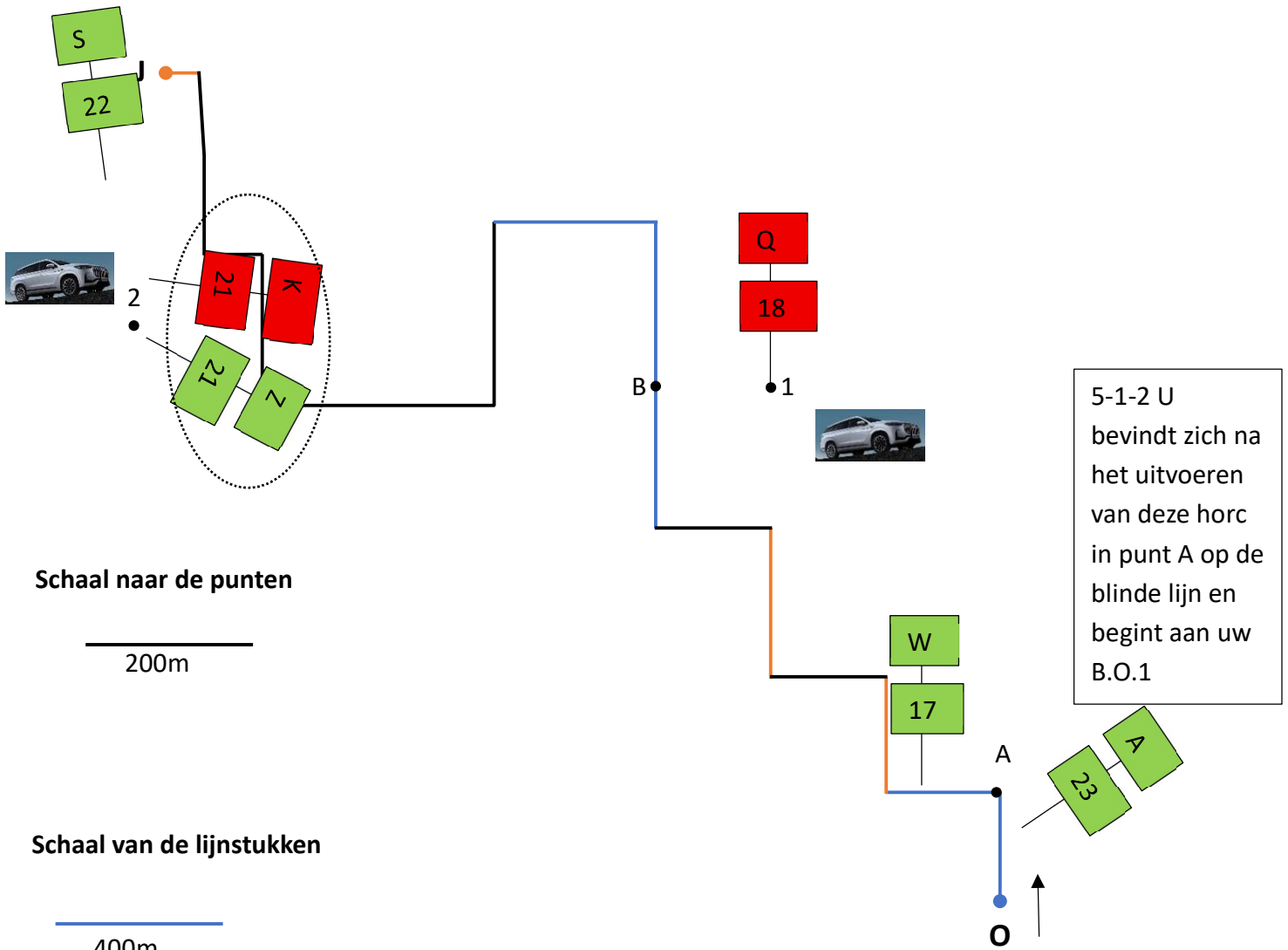
HP13

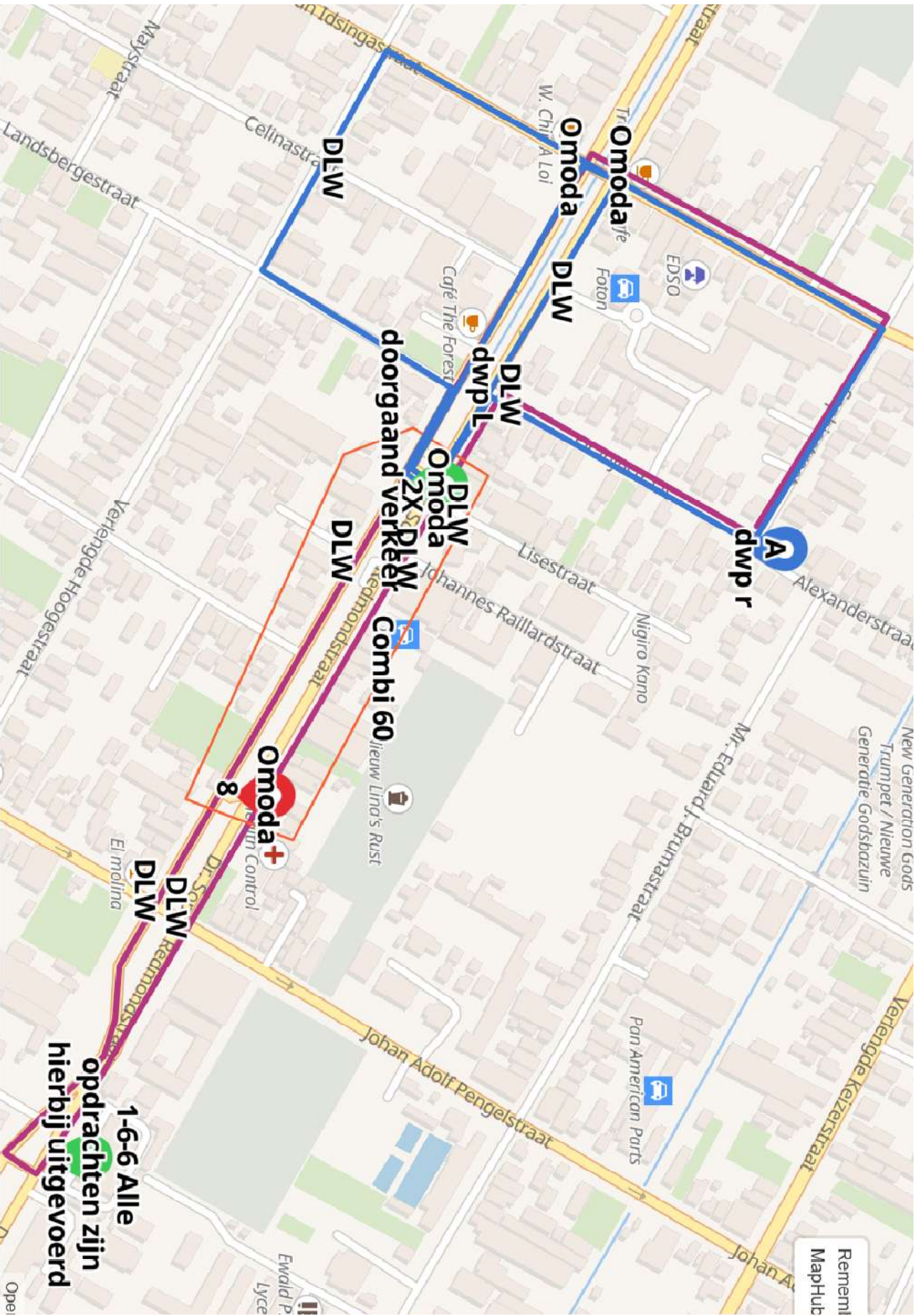
HP14

ROSSIGNOL

Paramaribo









Trajekt 2 rit C
BO2 Routebeschrijving